



HAROLD E. STEER  
Major  
Executive Officer



ANTHONY L. GIRILLO  
Captain  
C&E Officer



JAMES W. HEAD  
Captain  
Chief Director



JAMES A. COLLINS  
First Lieutenant  
Senior Director



R.T. KOZEROWSKI  
First Lieutenant  
Adjutant



LEIGH B. ZARSE  
First Lieutenant  
Senior Director



DALE E. CANTER  
Second Lieutenant  
Communications Off.



ROBERT G. BOOTH  
CWO  
Aircraft Director



GEORGE H. HARTZELL  
WO(W-1)  
Director



M/Sgt. W.A. Dehm



M/Sgt. P.J. Gallipeo



M/Sgt. A. Rivera



M/Sgt. W.H. Venneman



T/Sgt. J.S. Bezanson



T/Sgt. K.W. Bullock



T/Sgt. H.O. Oister



T/Sgt. B.R. Ramnes



T/Sgt. W.L. Seibel



T/Sgt.  
B.L. Washington



S/Sgt. V.S. Altieri



S/Sgt. D.L. Bowen



S/Sgt.  
T.R. Broadus, Jr.



S/Sgt. J.P. Combs



S/Sgt. G.H. Dewind



S/Sgt. G.T. Dress



S/Sgt. B.C. Dusek



S/Sgt. D.W. Flynn



S/Sgt. J.J. Forman



S/Sgt. E.W. Gamble



S/Sgt. T.L. Garvin



S/Sgt. A. Gooch



S/Sgt. R.G. Hall



S/Sgt. W.F. Haskell



S/Sgt. H.T. Hoffman



S/Sgt.  
M. Lanphear, Jr.



S/Sgt. E.C. Larkin



S/Sgt. K.N. Mitchell



S/Sgt. W.A. Pridham



S/Sgt. J.E. Rice



S/Sgt. A. Rosenbach



S/Sgt. R.S. Saine



S/Sgt. R.S. Sites



S/Sgt.  
C. Spinella, Jr.



S/Sgt. K.E. Taylor



S/Sgt. J.J. Turner



S/Sgt. A.H. Wilkinson



A/1c A.D. Aldieri



A/1c L.A. Basani



A/1c  
B.E. Coolidge, Jr.



A/1c L.N. Cousins



A/1c J.T. Dodds



A/1c W.H. Fontaine



A/1c F. Frey, Jr.



A/1c J.A. Gordon



A/1c  
F.J. Haskell, Jr.



A/1c J.R. Healy



A/1c M.M. Jacks



A/1c W. St. C. Lee



A/1c E.F. McIntyre



A/1c R.R. Miner



A/1c J. Mizerak, III



A/1c M.E. Nacarato



A/1c C.E. Nelson



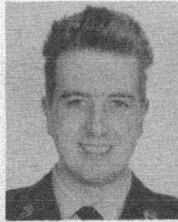
A/1c J.K. Patrick



A/1c M.S. Peno



A/1c R.W. Prellwitz



A/1c H.G. Schmitt



A/1c F.D. Sturtevant



A/1c M.L. White



A/1c R.B. Whitworth



A/1c D.J. Wilde



A/2c C.E. Abney



A/2c F.D. Allen



A/2c J.A. AmLaw



A/2c M. Auerbach



A/2c W.R. Barganier



A/2c B.D. Barker



A/2c R. Boyd



A/2c C.V. Brown



A/2c  
B.S. Burbine, Jr.



A/2c J.G. Catkins



A/2c W.P. Corbitt



A/2c E.M. Crishock



A/2c R.W. Crouch



A/2c W.F. Fredricks



A/2c C.E. Garrity



A/2c R.M. Gempko



A/2c E.H. Hammond



A/2c K.F. Hancock



A/2c J.J. Hayward



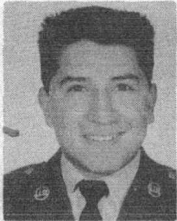
A/2c E.H. Huddell



A/2c J. King



A/2c  
C.M. Kirschenbaum



A/2c C.M. Limon



A/2c J.J. Malone



A/2c  
C. McWilliams, Jr.



A/2c T.A. Monts



A/2c J.A. Pike



A/2c K.E. Rekow



A/2c T.B. Rowe



A/2c C.W. Sargent



A/2c J.E. Schwegman



A/2c L.G. Smith



A/3c W.J. Elberfeld



A/3c  
S.U. Foresman, Jr.



A/3c R.I. Morris

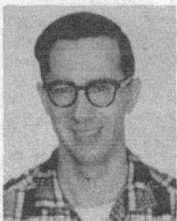


A/3c B.R. Parker



A/3c C.M. Reed

**TECHNICAL  
REPRESENTATIVES**



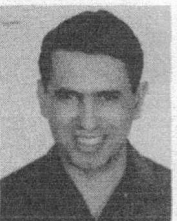
William M. Ritter  
Philco Corporation



Emile J. Rotschi  
Philco Corporation



Robert J. Schmitt  
Philco Corporation



William D. Shaheen  
Philco Corporation